



# NAVONA

纳沃那

A PORCELAIN  
BRAND WHO  
PROVIDES  
ALL-IN-ONE  
SOLUTIONS

全空间适配产品体系

# INSPIRATION

## 灵感

The design inspiration comes from classic marble and Roman cave stones, with a light beige background, balanced holes, delicate patterns, rich texture, and a strong cultural and historical charm.

Reconstruct, blend, and create. The lines are hidden in the bright and dark colors, and the flexible visual effects are allocated in the static state, so that art can be seen and touched to fill every inch of living space.

设计灵感来源于经典大理石罗马洞石，淡米黄底色，孔洞均衡，纹路细腻，质感丰富，有强烈的文化和历史韵味。

重构、相融、创造，线条隐现于若明若暗的色彩中，在静态中调拨出灵动的视觉效果，让艺术，可见可触，填满每一寸生活空间。

# 2

sizes  
规格

600x600mm  
600x1200mm

# 2

colors  
颜色

bianco  
chalk

# 12 / 24

design faces  
设计面

600x600mm  
24 faces

600x1200mm  
12 faces

# 1

finishings  
工艺面





NA612Z2-10 | 600x1200x10 | BIANCO 白色

TECHGRIP 科技防滑面



NA612Z4-10 | 600x1200x10 | CHALK 浅灰色

TECHGRIP 科技防滑面

# 12

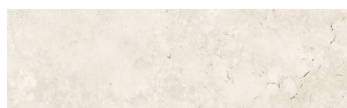
设计面  
Design Faces

规格  
600x1200x10

吸水率  
W.A < 0.1%



## Colors



Bianco  
白色

NA612Z2-10



Chalk  
浅灰色

NA612Z4-10



NA606Z2-95

600x600x9.5

BIANCO 白色

TECHGRIP 科技防滑面



NA606Z4-95

600x600x9.5

CHALK 浅灰色

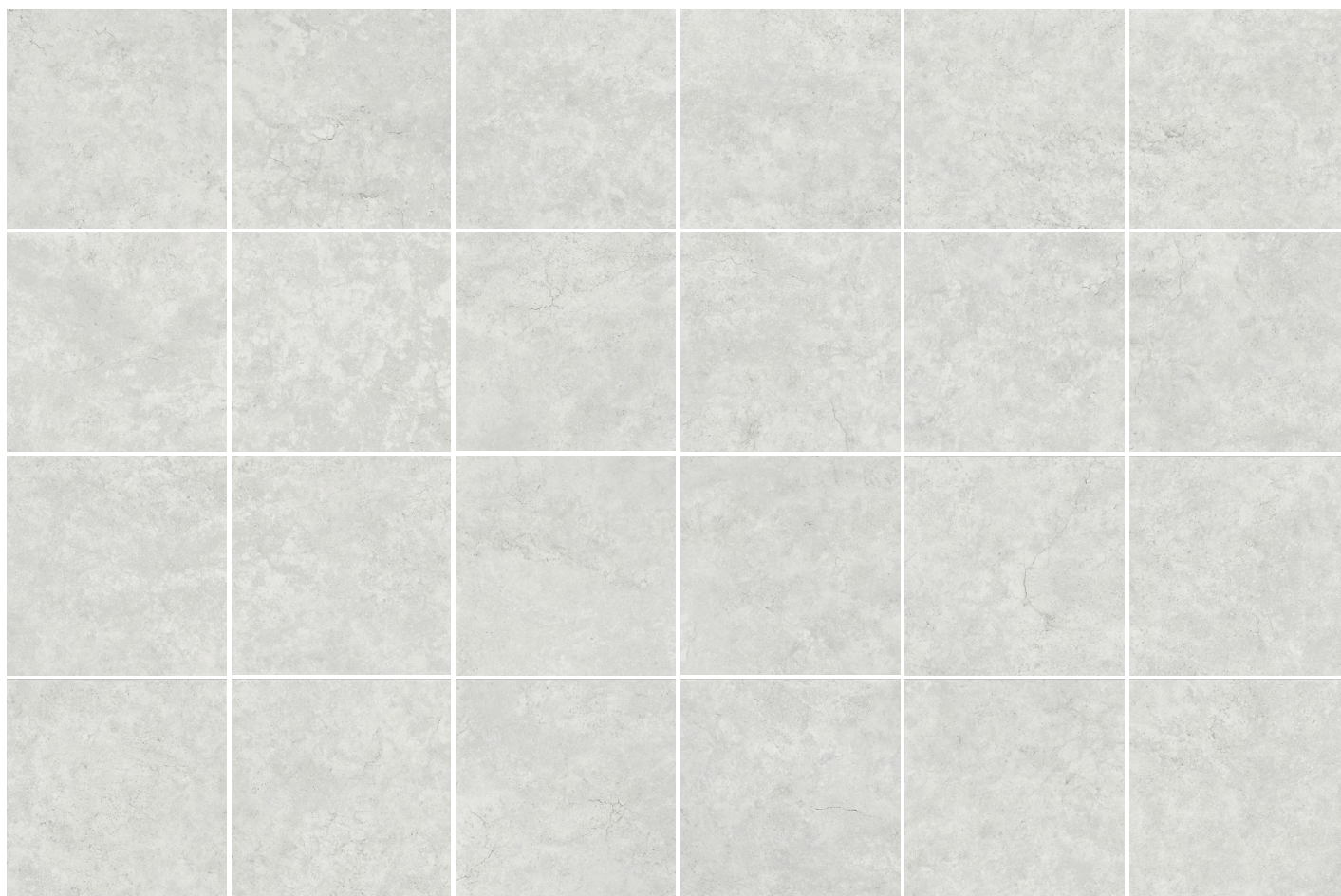
TECHGRIP 科技防滑面

# 24

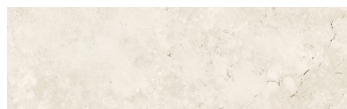
设计面  
Design Faces

规格  
600x600x9.5

吸水率  
W.A < 0.1%

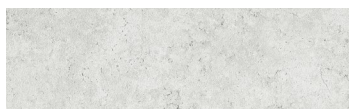


## Colors



Bianco  
白色

NA606Z2-95



Chalk  
浅灰色

NA606Z4-95



**R<sup>o</sup>ckyland** 岩域  
意式健康质感瓷砖

**OFFICE**

广东省佛山市禅城区季华西路 68 号中国陶瓷产业总部基地东区 C 座 08 栋  
East C-08, CCIH, No.68 Jihua West Road, Chancheng District, Foshan, China

